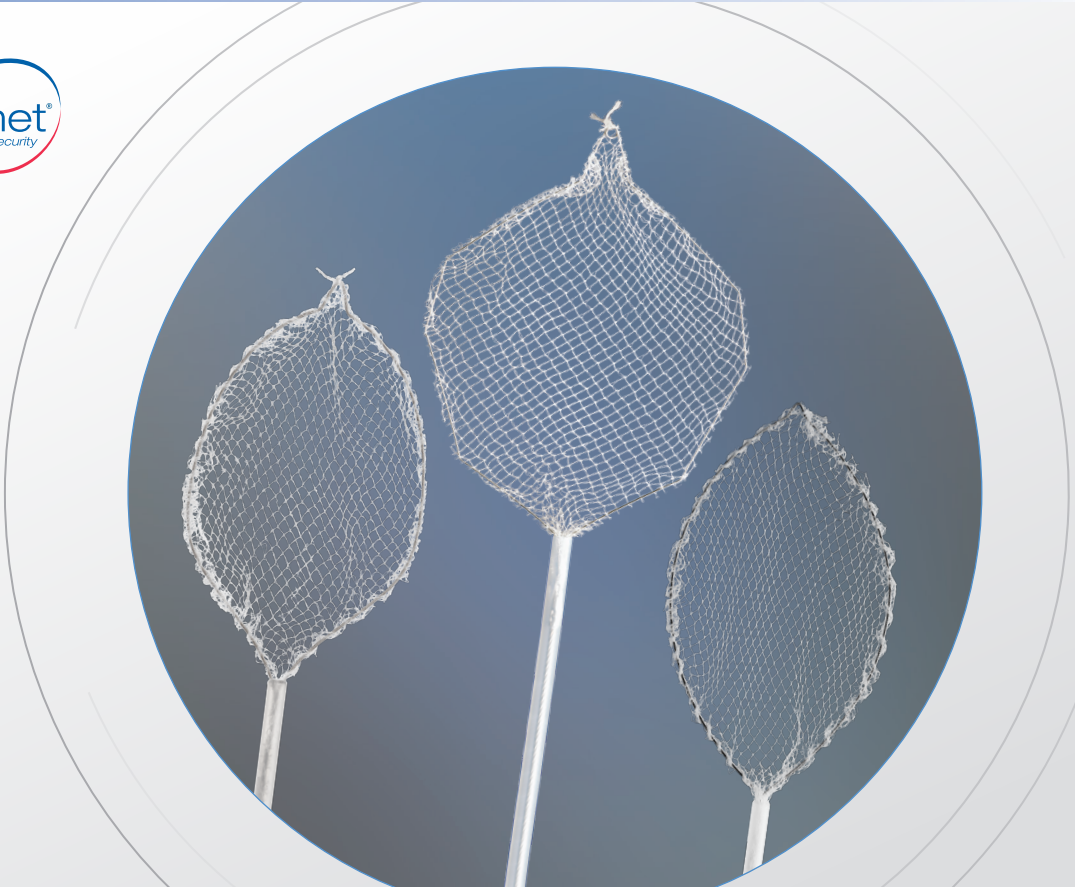


Roth Net[®] retrieval devices



Endoscopy

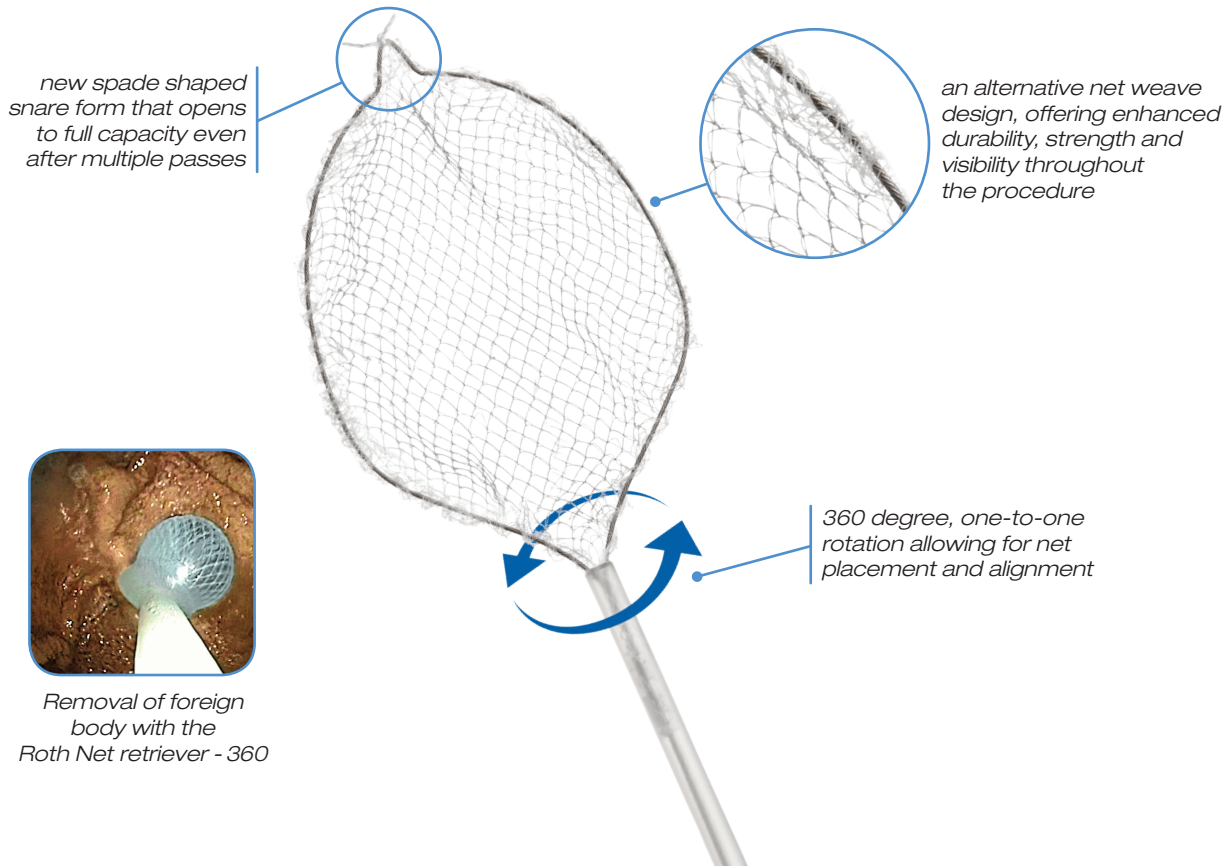


As a pioneer, STERIS Endoscopy partnered with Bennett Roth, M.D. and delivered the **first retrieval net** to GI endoscopy, revolutionizing the way the GI community approaches **polyp and foreign body retrieval**.

- Our retrieval nets offer a durable solution for challenging retrieval procedures, including food bolus, foreign body and tissue retrieval.
- Through innovation and evolution of the portfolio, the **Roth Net retriever** continues to be the **#1 trusted choice** in endoscopic retrieval.

Roth Net retriever - 360

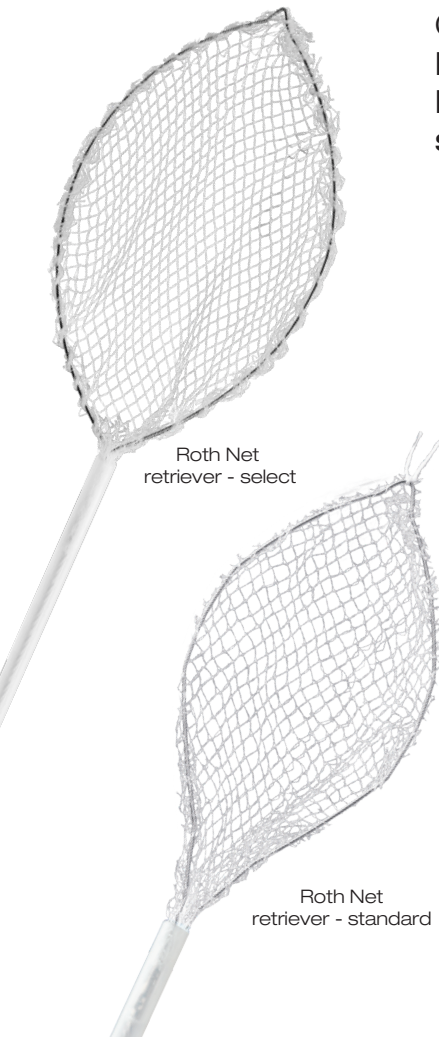
The **Roth Net retriever - 360** is the newest innovation and addition to the extensive Roth Net retriever portfolio – offering best-in-class features...



Tissue Retrieval

Capture and preserve tissue specimens with our **Roth Net Platinum® retriever – universal**, **Roth Net retriever – select** and **Roth Net retriever – standard**. All devices...

- » preserve polyp fragments and specimens for histopathology
- » allow for continued visibility through the net
- » open even in retroflexed position

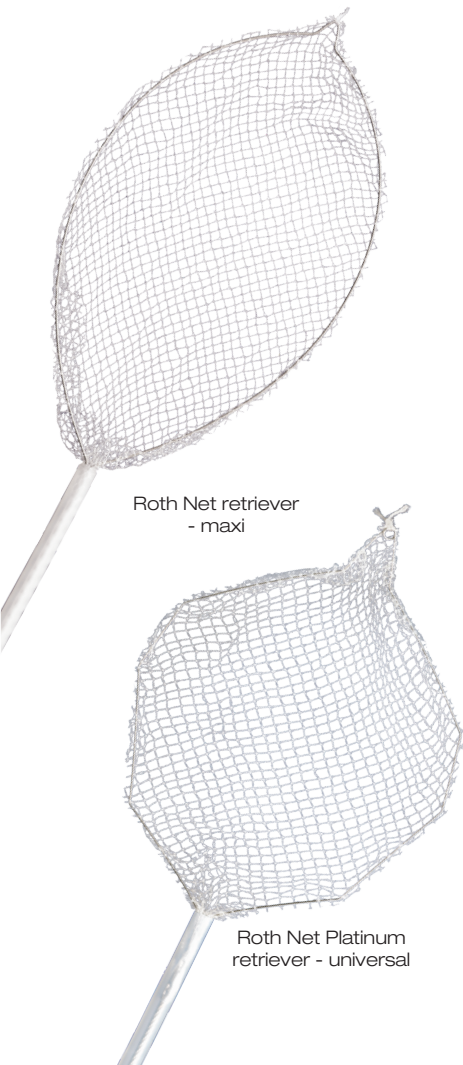


Roth Net retriever – select offering durability and strength across multiple passes



Retrieval of tissue sample with the Roth Net retriever

Foreign Body Retrieval

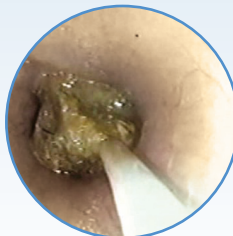


STERIS Endoscopy has led the innovation and development of tools needed for successful foreign body retrieval which includes the new **Roth Net retriever – 360**, the **Roth Net Platinum retriever – universal** and the **Roth Net retriever – maxi**, offering...

- » a strong, reinforced net for security and durability
- » a reliable design opening to full capacity across multiple passes



Roth Net retriever - maxi
*our largest net (4x8cm) for
retrieval of larger foreign
bodies such as AA batteries*

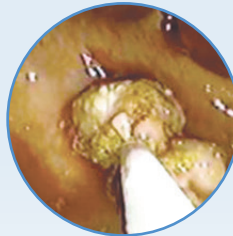
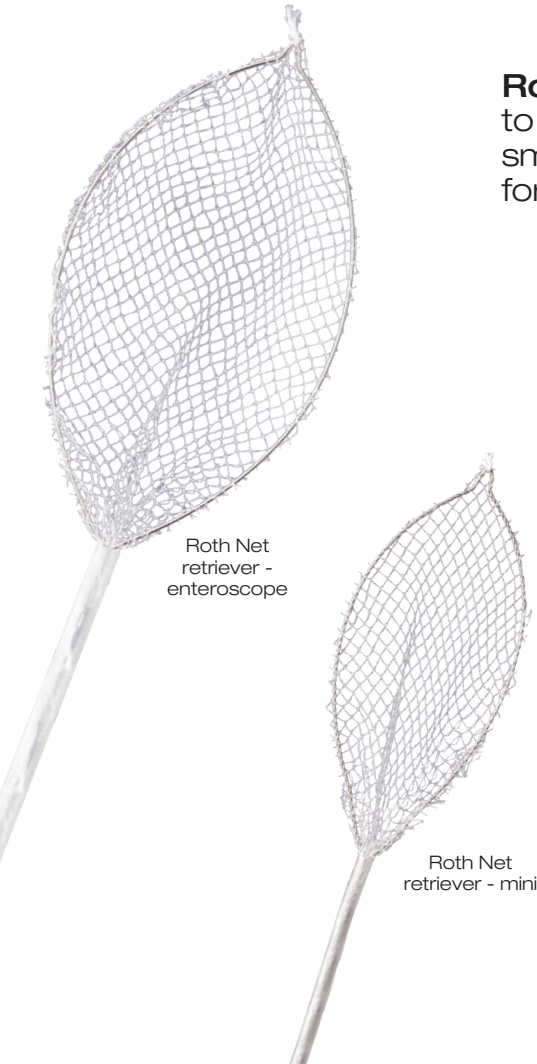


*Removal of food a bolus
with the **Roth Net
Platinum retriever***

Specialty Retrieval

Roth Net retrievers are specifically designed to address unique retrieval needs including small, medium, and large polyps, specimens and foreign bodies.

- » **Mini** retriever for small foreign bodies, tissue specimens and small channel endoscopes
- » **Enteroscopic** retriever (350cm) for excised polyp or foreign body retrieval in the small bowel



*Retrieval of polyp with the **Roth Net retriever** - **enteroscope***

part number	description	sheath diameter (mm)	length (cm)	net size (cm)	qty/box
BX00711197	Roth Net retriever - 360	2.5	230	3 x 5	5
BX00715050	Roth Net Platinum retriever - universal	2.5	230	4 x 5.5	5
BX00711170	Roth Net retriever- select	2.5	230	3 x 6	5
BX00711059	Roth Net retriever - maxi	3.0	160	4 x 8	5
BX00711057	Roth Net retriever - mini	1.8	160	2 x 4.5	5

ADDITIONAL RETRIEVAL NET OPTIONS

part number	description	sheath diameter (mm)	length (cm)	net size (cm)	qty/box
tissue retrieval					
BX00711150	Roth Net retriever - polyp	2.5	230	3 x 6	5
BX00711151	Roth Net retriever - polyp	2.5	230	3 x 6	10
BX00711162	Roth Net retriever - standard (sterile)	2.5	230	3 x 6	10
BX00715150	Roth Net Platinum retriever - polyp	3.0	230	4 x 5.5	5
BX00715160	Roth Net Platinum retriever - polyp (sterile)	3.0	230	4 x 5.5	5
foreign body retrieval					
BX00711050	Roth Net retriever - standard	2.5	230	3 x 6	5
BX00711052	Roth Net retriever - standard	2.5	230	3 x 6	10
BX00711053	Roth Net retriever - standard	2.5	160	3 x 6	5
BX00711198	Roth Net retriever - 360 (sterile)	2.5	230	3 x 5	10
BX00715060	Roth Net Platinum retriever- universal (sterile)	2.5	230	4 x 5.5	5
BX00711169	Roth Net retriever- select (sterile)	2.5	230	3 x 6	10
BX00711155	Roth Net Platinum retriever - food bolus	2.5	160	4 x 5.5	5
BX00711165	Roth Net retriever - maxi (sterile)	3.0	230	4 x 8	5
specialty retrieval					
BX00711152	Roth Net retriever - enteroscope	2.5	350	3 x 6	5
BX00711158	Roth Net retriever - mini polyp	2.8	230	2.5 x 4.5	10
BX00711159	Roth Net retriever - mini polyp (sterile)	2.8	230	2.5 x 4.5	5
BX00711168	Roth Net retriever - mini (sterile)	1.8	160	2 x 4.5	5

For more information on our Roth Net retriever portfolio, visit www.steris.com



Roth Net® and Roth Net® Platinum® is a registered trademark of STERIS Endoscopy.
©2019 STERIS Endoscopy or its affiliates. All rights reserved.
Unless otherwise indicated, all marks denoted with ® or ™ are registered with the U.S. Patent and Trademark Office, or are owned by STERIS or its affiliates.

Follow us:    



Endoscopy

STERIS
5960 Heisley Road
Mentor, OH 44060-1834 – USA
Customer Service: 800-548-4873
Fax: 440-639-4495

www.steris.com