

Bright. Clear. True.



PANOVIEW
ULTRA

The new high-resolution telescope generation



Bright. Clear. True.

The latest generation of high definition optics housed in the **PANOVIEW ULTRA** is optimized for an ultra high definition (4K) image through the enhanced delivery of light to the surgical field. The development of innovative materials delivers brightness and clarity beyond expectations.

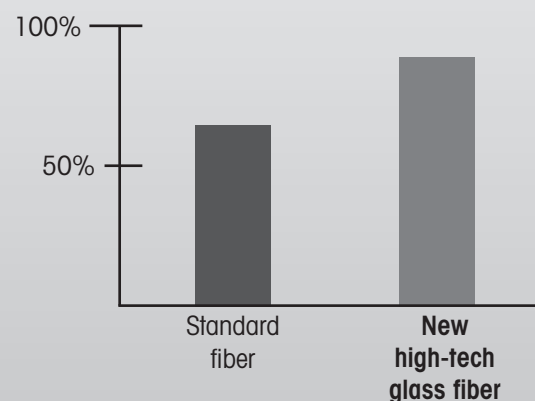
Strikingly Bright

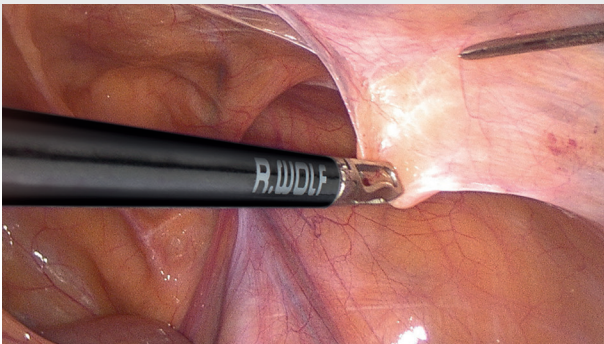
The demand for the ultra high resolution imaging in the operating room requires that telescopes transmit more light. The Panoview ULTRA telescope houses an increased number of advanced optical glass fibers, capable of superior light transmission compared to other fiber optic technologies. With the addition of more fibers, the endoscopic surgical site receives optimal illumination.

Clearly Brilliant

The Panoview Ultra telescopes are built with extra low dispersion glass rod lenses which control chromatic aberrations and enhance image quality. The effect is a drastically improved sharpness on the image's periphery, as well as an balanced sharpness gradient over the wide field of view and deep focal range.

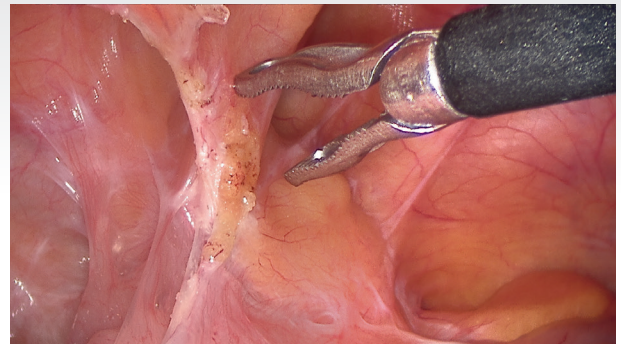
Light transmission after 500 autoclave cycles





Truly Natural

Telescopes can be responsible for chromatic aberrations, but Panoview Ultra's glass fibers guarantee an advantageous white-light, natural impression and setting a new color rendering standard.



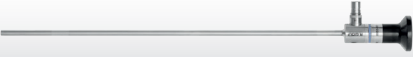



Simple Handling

The **PANOVIEW ULTRA** telescopes can be used with the same light cable recommended for 10 mm diameter telescopes. Color coding on the connectors also make matching the correct light cable with the appropriate telescope an intuitive task.

PANOVIEW ULTRA's durable light fibers, in addition to providing brilliant illumination, are also extremely durable. The telescope, after extensive reprocessing testing, has been shown to maintain a high light transmission standard compared to standard light fibers, ensuring the telescope's high performance over and extended lifetime.

Telescopes:

	PANOVIEW ULTRA Telescope 5.5 mm, 0°, WL 300 mm8935461
	PANOVIEW ULTRA Telescope 5.5 mm, 30°, WL 300 mm8935462
	PANOVIEW ULTRA Telescope 5.5 mm, 0°, WL 430 mm89354416
	PANOVIEW ULTRA Telescope 5.5 mm, 30°, WL 430 mm89354426

Recommended light cables:

Fiber Light Cable Set,

ø 5.0 mm, 2.3 m long

comprising:

Fiber light cable (80665023),

Adapter projector-side (8095.07)

and adapter endoscope-side (809509) 806650231

(for maximum light transmission)

Fiber Light Cable Set *fusion*

high-temperature resistant,

ø 5.0 mm, 2.3 m long

comprising:

Fiber light cable (80655023),

Adapter projector-side (8095.07)

and adapter endoscope-side (809509) 806550231

(for maximum light transmission)

Accessories:

Reprocessing basket,

(L x W x H) 471 x 59 x 54 mm 38021.111

Reprocessing basket,

(L x W x H) 610 x 59 x 54 mm 38022.111